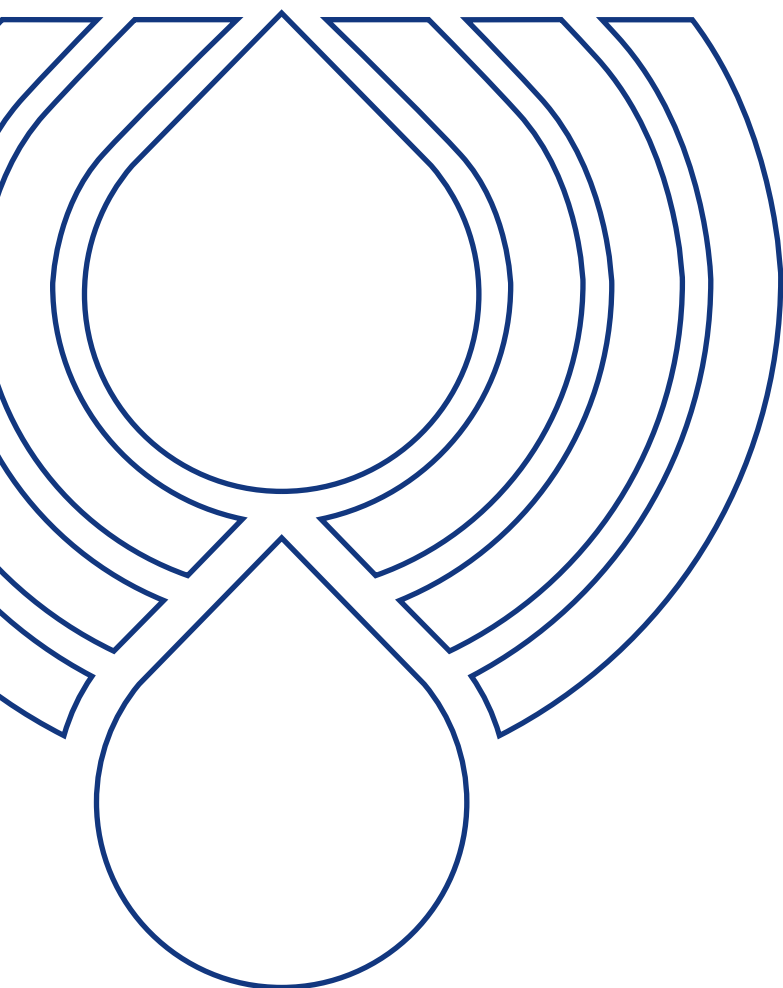


# TANK ACCESSORIES

ACCESSORIES



PASSION TO PERFORM







## A WORLDWIDE LEADER IN THE FIELD OF HYDRAULIC FILTRATION EQUIPMENT.

Our company started life in 1964, when Bruno Pasotto decided to attempt to cater for the requests of a market still to be fully explored, with the study, design, development, production and marketing of a vast range of filters for hydraulic equipment, capable of satisfying the needs of manufacturers in all sectors. The quality of our products, our extreme competitiveness compared with major international producers and our constant activities of research, design and development has made us a worldwide leader in the field of hydraulic circuit filtering. Present for over 50 years in the market, we have played a truly decisive role in defining our sector, and by now we are a group capable of controlling our entire chain of production, monitoring all manufacturing processes to guarantee superior quality standards and to provide concrete solutions for the rapidly evolving needs of customers and the market.

## MARKET **LEADER**



Our work is based on a skillful interaction between advanced technology and fine workmanship, **customizing products according to specific market requests**, focusing strongly on innovation and quality, and following every step in the manufacturing of both standard and special products, fully respecting customer expectations.



Our customer-oriented philosophy, which enables us to satisfy all customer requests **rapidly and with personalized products**, makes us a **dynamic and flexible enterprise**. The possibility of constantly controlling and monitoring the entire production process is essential to allow us to guarantee the quality of our products.

## WORLDWIDE PRESENCE

Our foreign Branches enable us to offer a diversified range of products that allow us to successfully face the aggressive challenge of international competition, and also to maintain a stable presence at a local level.

The Group boasts **8** business branches





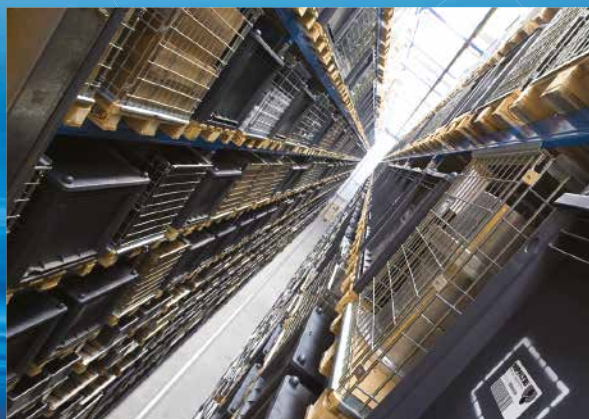
## TECHNOLOGY

Our constant **quest for excellence in quality and technological innovation** allows us to offer only the best solutions and services for applications in many fields, including general industry, test rigs, lubrication, heavy engineering, renewable energies, naval engineering, offshore engineering, aviation systems, emerging technologies and mobile plant (i.e. tractors, excavators, concrete pumps, platforms).



## AND PRODUCTION

Our high level of technological expertise means **we can rely entirely on our own resources, without resorting to external providers.** This in turn enables us to satisfy a growing number of customer requests, also exploiting our constantly updated range of machines and equipment, featuring **fully-automated workstations** capable of **24-hour production.**





## SUCTION FILTERS

Flow rates  
up to 875 l/min

Mounting:  
- Tank immersed  
- In-Line  
- In tank with  
shut off valve  
- In tank  
with flooded suction

## RETURN FILTERS

Flow rates  
up to 3000 l/min

Pressure  
up to 20 bar

Mounting:  
- In-Line  
- Tank top  
- In single  
and duplex designs

## RETURN / SUCTION FILTERS

Flow rates  
up to 300 l/min

Pressure  
up to 80 bar

Mounting:  
- In-Line  
- Tank top

## SPIN-ON FILTERS

Flow rates  
up to 365 l/min

Pressure  
up to 35 bar

Mounting:  
- In-Line  
- Tank top

## LOW & MEDIUM PRESSURE FILTERS

Flow rates  
up to 3000 l/min

Pressure  
up to 80 bar

Mounting:  
- In-Line  
- Parallel manifold version  
- In single  
and duplex designs

## HIGH PRESSURE FILTERS

Flow rates  
up to 750 l/min

Pressure from 110 bar  
up to 560 bar

Mounting:  
- In-Line  
- Manifold  
- In single  
and duplex designs



## PRODUCT RANGE

MP Filtri can offer a vast and articulated range of products for the global market, suitable for all industrial sectors using hydraulic equipment.

This includes filters (suction, return, return/suction, spin-on, pressure, stainless steel pressure) and structural components (motor/pump bell-housings, transmission couplings, damping rings, foot brackets, aluminium tanks, cleaning covers).

We can provide all the skills and solutions required by the modern hydraulics industry to monitor contamination levels and other fluid conditions.

Mobile filtration units and a full range of accessories allow us to supply everything necessary for a complete service in the hydraulic circuits.



### STAINLESS STEEL HIGH PRESSURE FILTERS

Flow rates up to 125 l/min  
Pressure from 320 bar  
up to 1000 bar

Mounting:

- In-Line
- Manifold
- In single and duplex designs



### CONTAMINATION MONITORING PRODUCTS

- Online, in-line particle counters
- Off-line bottle sampling products
- Fully calibrated using relevant ISO standards
- A wide range of variants to support fluid types and communication protocols



### MOBILE FILTRATION UNITS

Flow rates from 15 l/min  
up to 200 l/min



### POWER TRANSMISSION PRODUCTS

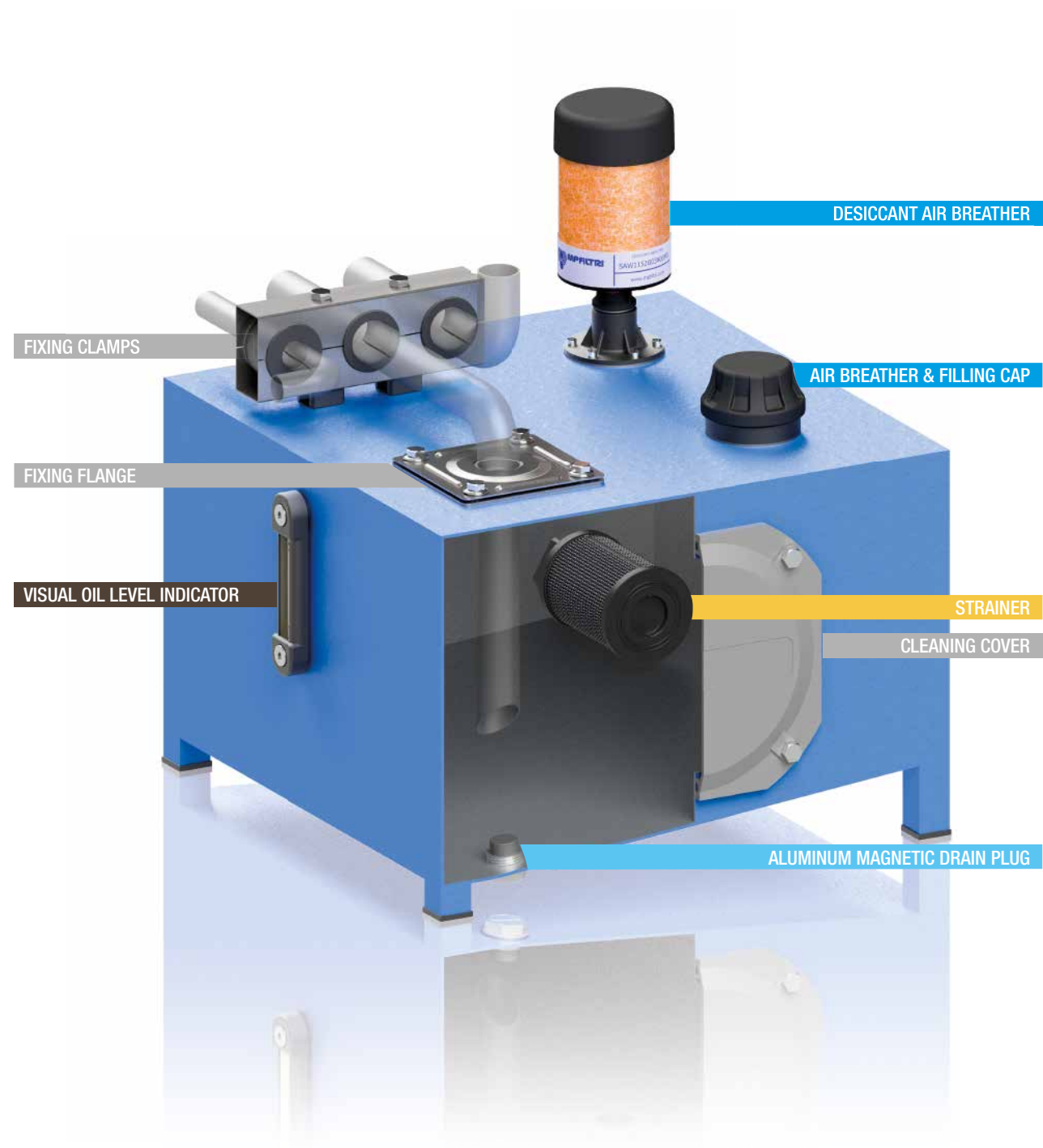
- Aluminium bell-housings for motors from 0.12 kW to 400 kW
- Couplings in Aluminium Cast Iron - Steel
- Damping rings
- Foot bracket
- Aluminium tanks
- Cleaning covers



### TANK ACCESSORIES

- Oil filler and air breather plugs
- Optical and electrical level gauges
- Pressure gauge valve selectors
- Pipe fixing brackets
- Pressure gauges

# TANK ACCESSORIES



<b>1</b>	<b>page</b>	<b>INTRODUCTION</b>
1		COMPANY
6		PRODUCT RANGE

<b>10</b>	<b>page</b>	<b>STRAINERS</b>
13		STR & MPA - MPM Submerged suction filter, with bypass or magnetic column

<b>20</b>	<b>page</b>	<b>AIR BREATHERS AND FILLER PLUGS</b>
23		SAP 054-075 - SA Air breathers
29		SAW 115 Desiccant air breathers
33		SCS Metal air breathers with interchangeable filter element
39		SME 1 - SMF 1 - SML 1 Risers for breathers and filler caps installation
45		TA 46 - TAP 50 - SAP 50 Filling cap, air breather & filling cap
53		TA 80 Filling cap
57		TAP 90 Air breather & filling cap
63		TAP 114 Air breather & filling cap
67		TAP 115 & SAP 115 Filling cap, air breather & filling cap

<b>72</b>	<b>page</b>	<b>FILLER AND DRAIN PLUGS</b>
75		TC 50 Nylon filler plug
79		TKT - TSD Nylon filler plugs
79		TKM Aluminium magnetic drain plug

<b>86</b>	<b>page</b>	<b>VISUAL OIL LEVEL INDICATORS</b>
89		LCP - LCC Spy eyes
95		LVA - LVU Visual oil level indicator

<b>100</b>	<b>page</b>	<b>ELECTRICAL OIL LEVEL INDICATORS</b>
103		LEN - LEG - LET - LEM - LEU Electrical oil level indicator
115		LVK Electrical and visual oil level indicator

<b>120</b>	<b>page</b>	<b>ACCESSORIES</b>
123		EM1 Gauge isolator valves
129		SVM Gauge isolator valves
133		FTA - FTR Oil tank fixing flange
137		SFT Fixing clamps
143		OB Cleaning covers
149		SE10LT Aluminium tanks

**EM1 & SVM** gauge isolator valves are designed to protect pressure gauges from pressure shocks when the pressure reading is not required.

**FTA/FTR** flanges make it possible to fix suction and return lines on the reservoir cover.

**MULTIFLEX** fixing clamps make it possible to install various pipelines of different types and diameters, rapidly, easily, and, more importantly, economically.

**CLEANING COVERS**, facilitating the maintenance of oil tanks in hydraulic power units, without necessarily having to dismantle the unit.

**ALUMINIUM TANKS** of 10 litres capacity, allowing the assembly of a compact hydraulic power unit.



# Accessories



EM1	page 123
SVM	129
FTA - FTR	133
SFT	137
OB	143
SE10LT	149



# EM1 series

Gauge isolator valves



# EM1 GENERAL INFORMATION

## Technical data

### Gauge isolator valves

Gauge isolator valves are designed to protect pressure gauges from pressure shocks when the pressure reading is not required; after each reading setting the selector to the closed position serves to depressurise the pressure gauge by means of the T fitting connected to the reservoir.

3 and 6-way pressure gauge selectors perform the same function as the gauge isolator valves, allowing pressure values from different parts of the system to be read using a single pressure gauge.

### Working instructions:

- Button not pressed: pressure gauge isolated
- Button pressed: pressure gauge reading
- Button pressed and turned (either to left or right): button remains in position and pressure gauge measures pressure continuously.
- To isolate the pressure gauge from pressure reading, turn the button until it returns to the not pressed position.

### Materials A-B

- Body: Cast iron
- Pin: Steel
- Seals: NBR, FPM
- Knob/cover: Nylon
- Stop ring: Steel
- Spring: Steel
- Nameplate: Aluminium
- Nut-screw: Galvanized steel

### Materials C

- Body: Cast iron
- Pin: Steel
- Seals: NBR, FPM
- Knob/cover: Nylon
- Stop ring: Steel
- Spring: Steel
- Nameplate: Aluminium
- Nut-screw: Galvanized steel
- Plug: Anodized steel

### Operating pressure

400 bar

### Operating temperature

From -25 °C to + 100 °C

### Weight

EM1 version A	0.41 kg
EM1 version B	0.44 kg
EM1 version C	1.00 kg

### Quantity

25 pcs/pack



## Designation & Ordering code

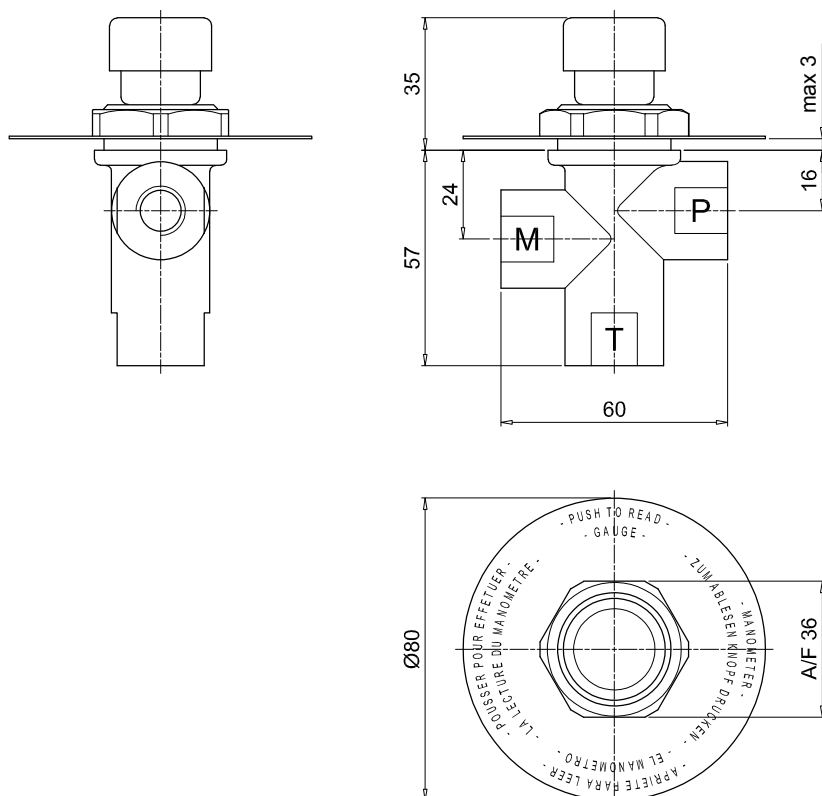
### EM1

Series and size	Configuration example : EM1 A G2 A P01				
<b>EM1</b>					
Version					
<b>A</b> Threaded connections, panel mount with hex nut					
<b>B</b> Threaded connections, panel mount with screws					
<b>C</b> Manifold/threaded connections, panel mount with screws					
Connection					
<b>G1</b> G 1/4"					
<b>G2</b> 1/4" NPT					
<b>G3</b> SAE 5 - 1/2" - 20 UNF					
Seals					
<b>A</b> NBR					
<b>V</b> FPM					
Execution					
<b>P01</b> MP Filtri standard					
<b>Pxx</b> Customized					

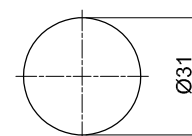


EM1

version A

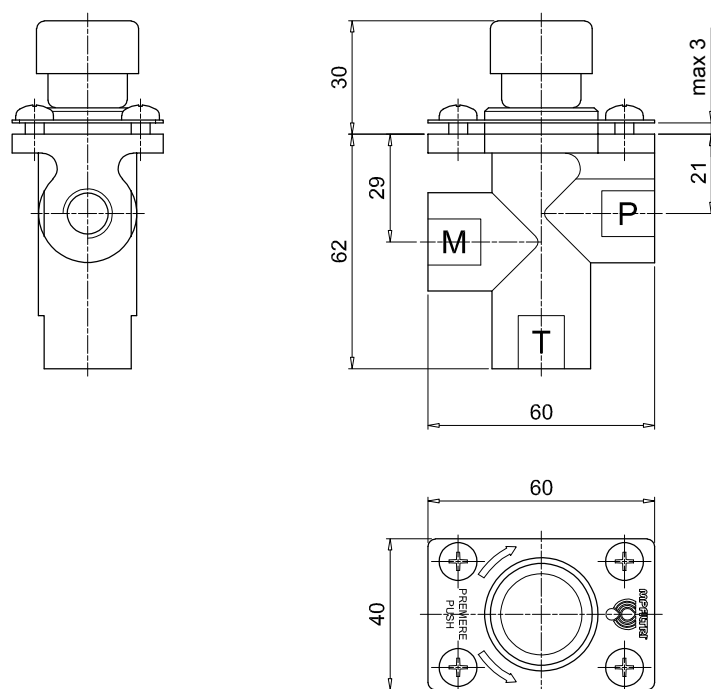


Holes on the panel

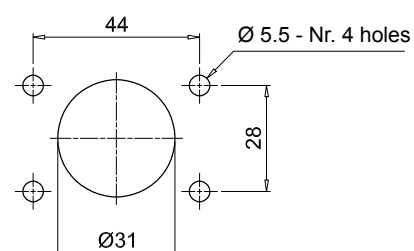


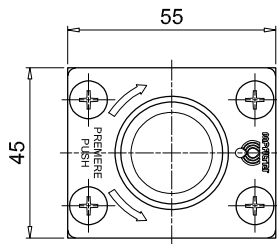
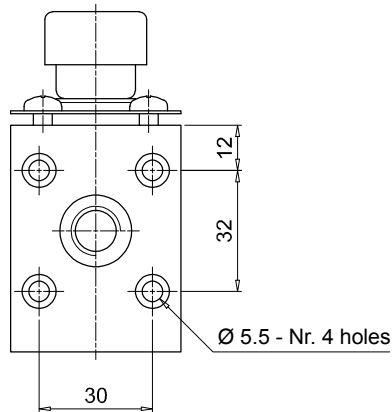
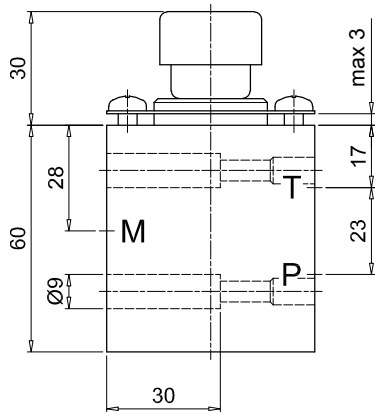
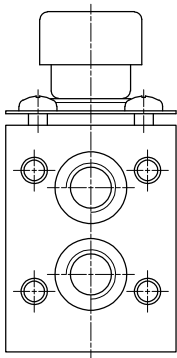
EM1

version B

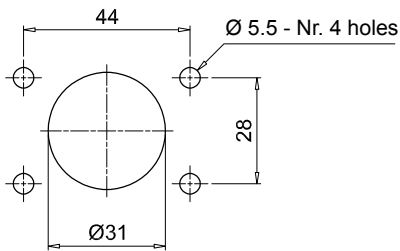


Holes on the panel





Holes on the panel









# SVM series

Gauge isolator valves



# SVM GENERAL INFORMATION

## Technical data

### Gauge isolator valves

Gauge isolator valves are designed to protect pressure gauges from pressure shocks when the pressure reading is not required; after each reading setting the selector to the closed position serves to depressurise the pressure gauge by means of the T fitting connected to the reservoir.

3 and 6-way pressure gauge selectors perform the same function as the gauge isolator valves, allowing pressure values from different parts of the system to be read using a single pressure gauge.

### Working instructions:

- Knob not pressed: pressure gauge isolated
- Knob pressed: pressure gauge reading
- Knob pressed and turned: the knob remains in position and pressure gauge measures pressure continuously.
- To isolate the pressure gauge from pressure reading, turn the button until it returns to the not pressed position.

### Materials

- Body: Cast iron
- Pin: Steel
- Seals: NBR, FPM
- Cover: Anodized aluminium
- Flange: Anodized aluminium
- Knob: Nylon
- Ringnut: Nylon
- Nut-screw: Galvanized steel, Phosphatized steel
- Pin: Steel

### Operating temperature

From -25 °C to + 100 °C

### Weight

SVM length 3 1.547 kg

SVM length 6 1.507 kg

### Quantity

25 pcs/pack



## Designation & Ordering code

### SVM

#### Series and size

**SVM**

Configuration example : SVM 3 G1 A P01

#### Version

**3** Nr. 3 pressure ports

**6** Nr. 6 pressure ports

#### Connection

**G1** G 1/4"

**G2** 1/4" NPT

**G3** SAE 5 - 1/2" - 20 UNF

#### Seals

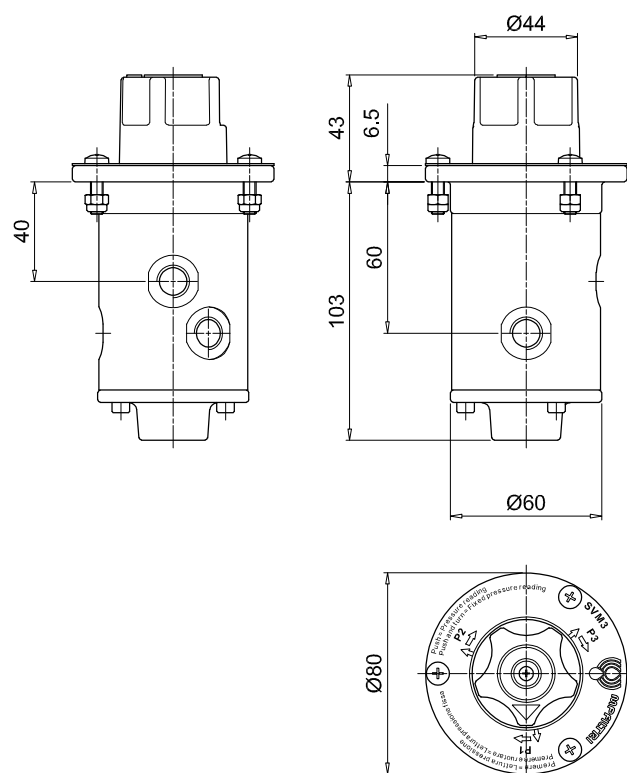
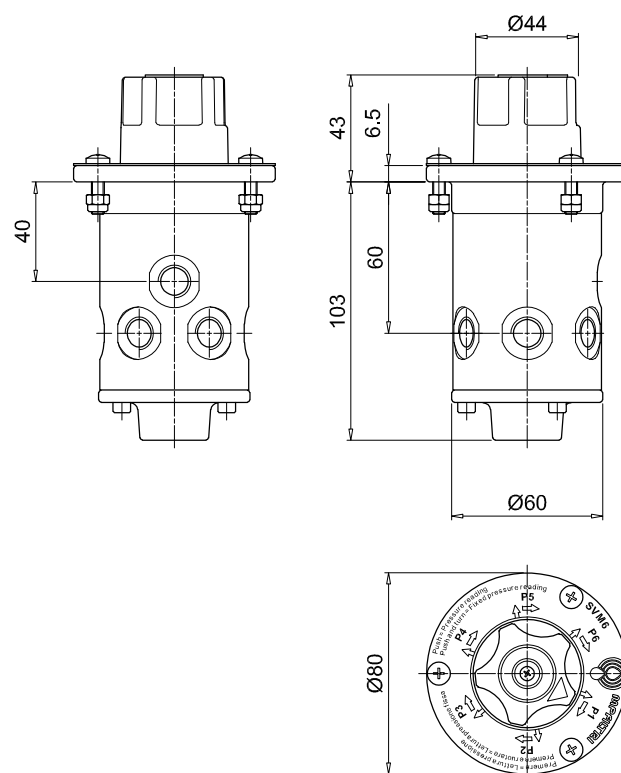
**A** NBR

**V** FPM

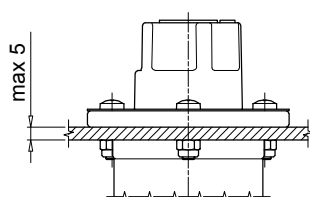
#### Execution

**P01** MP Filtri standard

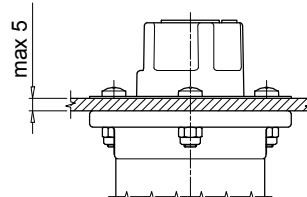
**Pxx** Customized

SVM  
version 3SVM  
version 6

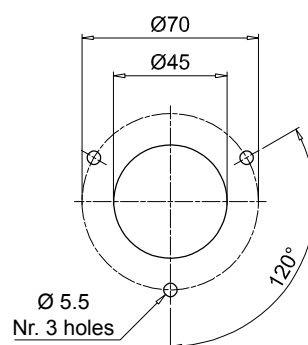
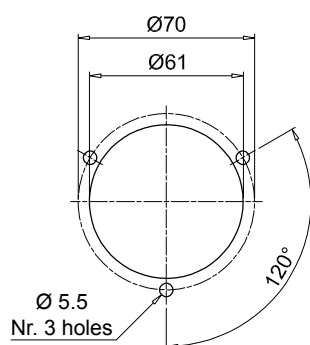
External mount



Internal mount



Holes on the panel





# FTA -FTR series

Oil tank fixing flange



# FTA - FTR GENERAL INFORMATION

## Technical data

### Oil tank fixing flange

FT flanges make it possible to fix suction and return lines on the reservoir cover.

Fitting a flexible insert allows separation of pipes.

Both rigid pipes and flexible hoses can be separated from the reservoir walls, absorbing vibration and reducing plant noise emissions.

### Operating pressure

400 bar

### Operating temperature

From -25 °C to + 100 °C

### Materials

- Flange: Galvanized steel
- Flange seal: Inorganic fibre
- Tube seal: NBR
- Screw: Galvanized steel

### Weight FTA

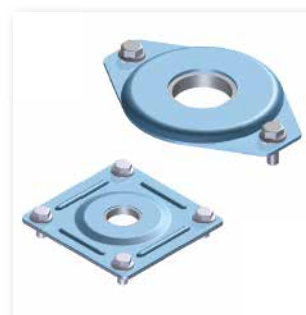
FTA 1215	0.590 kg
FTA 1620	0.570 kg
FTA 2225	0.550 kg
FTA 2630	0.530 kg
FTA 3235	0.500 kg
FTA 3842	0.520 kg
FTA 4850	0.920 kg
FTA 6061	0.900 kg
FTA 7577	0.860 kg
FTA 8789	0.830 kg

### Weight FTR

FTR 0610	0.450 kg
FTR 1215	0.430 kg
FTR 1620	0.400 kg
FTR 2225	0.100 kg
FTR 2630	0.103 kg
FTR 3235	0.980 kg
FTR 3842	0.950 kg
FTR 4850	0.900 kg
FTR 6061	0.850 kg

### Quantity

25 pcs/pack

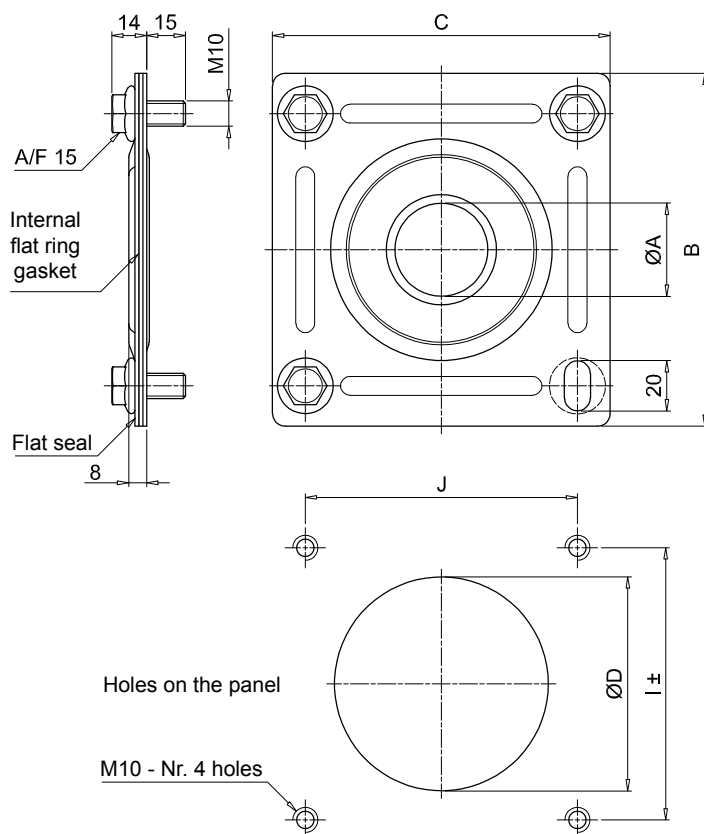


## Designation & Ordering code

FTA - FTR				
Series		Configuration example :		
FTA	FTR	FTA	2630	G A P01
Size		FTA	FTR	
0610	Pipe Ø06 ÷ 10 mm		•	
1215	Pipe Ø12 ÷ 15 mm	•	•	
1620	Pipe Ø16 ÷ 20 mm	•	•	
2225	Pipe Ø22 ÷ 25 mm	•	•	
2630	Pipe Ø26 ÷ 30 mm	•	•	
3235	Pipe Ø32 ÷ 35 mm	•	•	
3842	Pipe Ø38 ÷ 42 mm	•	•	
4850	Pipe Ø48 ÷ 50 mm	•	•	
6061	Pipe Ø60 ÷ 61 mm	•	•	
7577	Pipe Ø75 ÷ 77 mm	•		
8789	Pipe Ø87 ÷ 89 mm	•		
Flange seals		FTA	FTR	
G	Inorganic fiber	•		
O	Without seal		•	
Pipe seals				
A	NBR			
Execution				
P01	MP Filtri standard			
Pxx	Customized			

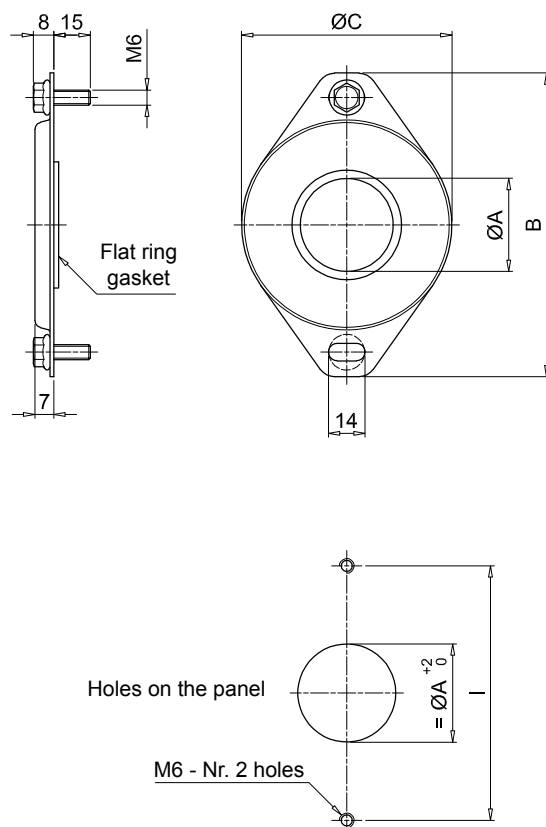


### FTA



Size	ØA [mm]		B [mm]	C [mm]	ØD [mm]	I [mm]	J [mm]
	min	max					
<b>1215</b>	12	15	140	134	85	108±1	108
<b>1620</b>	16	20					
<b>2225</b>	22	25					
<b>2630</b>	26	30					
<b>3235</b>	32	35					
<b>3842</b>	38	42	190	184	130	159±4	159
<b>4850</b>	48	50					
<b>6061</b>	60	61					
<b>7577</b>	75	77					
<b>8789</b>	87	89					

### FTR



Size	ØA [mm]		B [mm]	ØC [mm]	I [mm]
	min	max			
<b>0610</b>	6	10	71	40	54
<b>1215</b>	12	15			
<b>1620</b>	16	20			
<b>2225</b>	22	25			
<b>2630</b>	26	30			
<b>3235</b>	32	35	121	84	102
<b>3842</b>	38	42			
<b>4850</b>	48	50			
<b>6061</b>	60	61			



# SFT series

Fixing clamps



## Technical data

### Fixing clamps

MULTIFIX fixing clamps are particularly suitable when a series of pipelines must be installed requiring neat and high precision installation. These brackets make it possible to install various pipelines of different types and diameters, rapidly, easily, and, more importantly, economically.

MULTIFIX clamps support, guide, and absorb impact and vibration, protecting the pipes and dispensing with the need for complex and unsightly mounting systems with angle clamps etc.

An orderly layout facilitates maintenance resulting in significant savings in running costs; it also allows intuitive visual design of the plant, which can be assembled easily even without specialised labour.

### Materials

- Pair of brackets: Galvanized steel
- Bush: NBR
- Spacer: Steel
- Studs: Steel
- Screws: Steel
- Foot and screw: Steel

### Weight

SFT 38 1	0.050 kg
SFT 51 1	0.100 kg
SFT 78 1	0.570 kg

### Operating temperature

From -25 °C to + 100 °C

### Quantity

25 pcs/pack



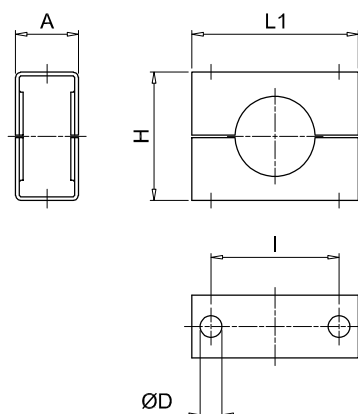
## Designation & Ordering code

### SFT

Series					Configuration example :			
<b>SFT</b> Pair of brackets					SFT	51	19	P01
Size								
<b>38</b>	Height 38 mm - 1 1/2"							
<b>51</b>	Height 51 mm - 2"							
<b>78</b>	Height 78 mm - 3"							
Number of pipe		38	51	78				
<b>1</b>	Single pipe	•	•	•				
<b>16</b>	Nr. 16 pipes			•				
<b>19</b>	Nr. 19 pipes		•					
<b>26</b>	Nr. 26 pipes	•						
Execution								
<b>P01</b>	MP Filtri standard							
<b>Pxx</b>	Customized							

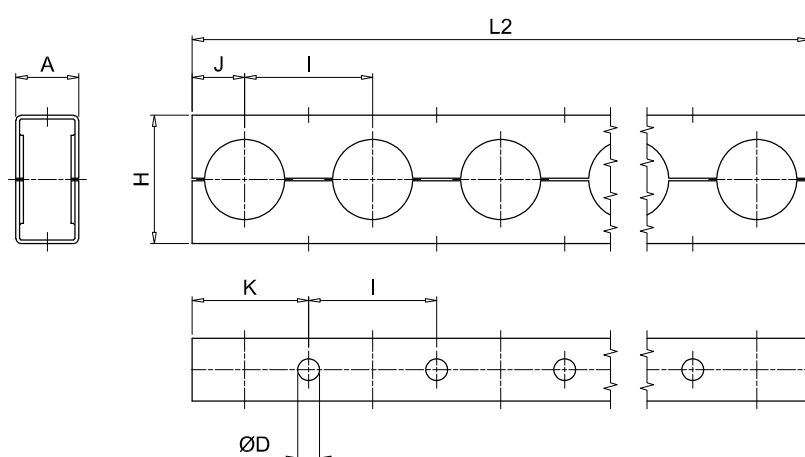
SFT

Single pipe



SFT

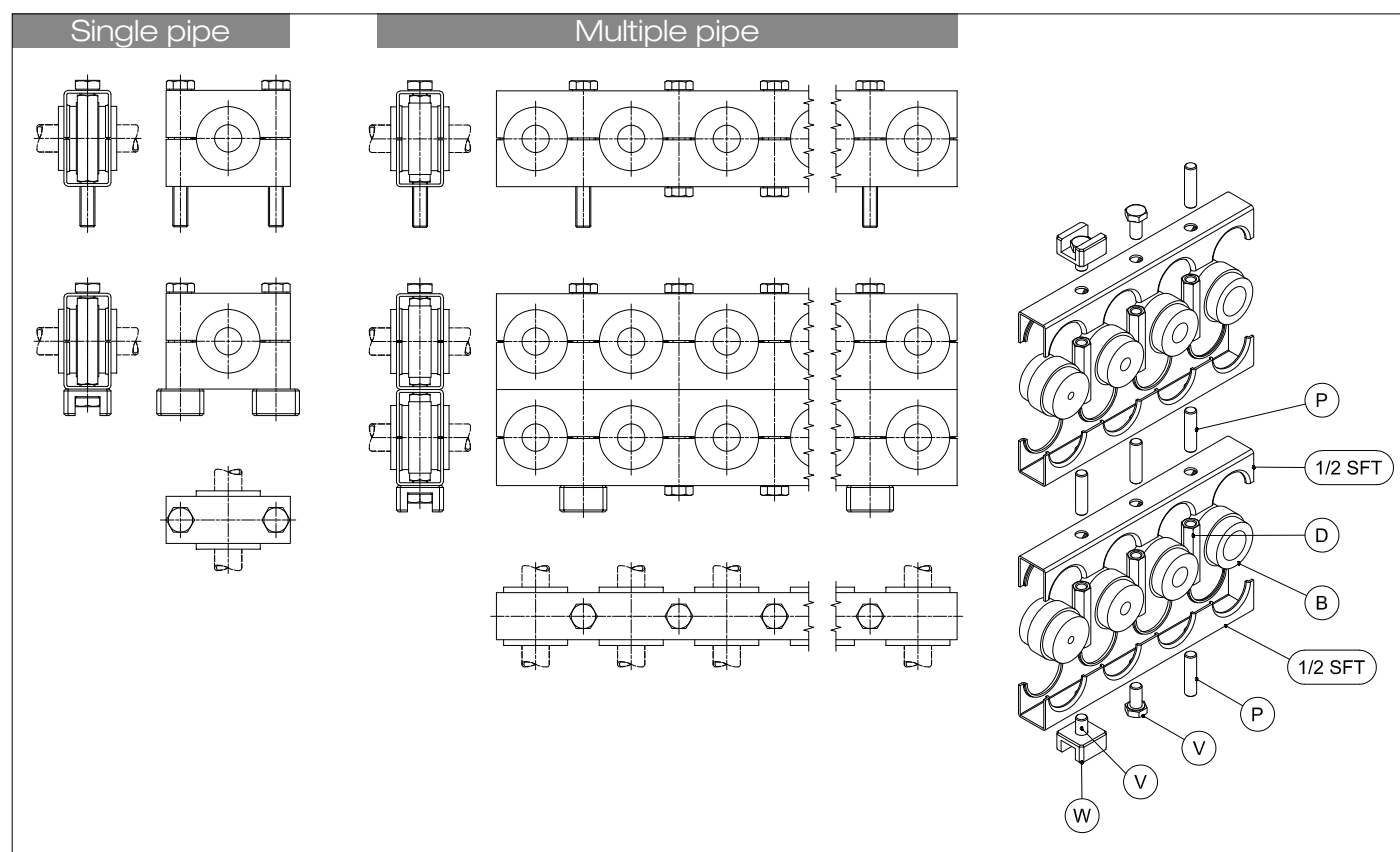
Multiple pipe



Size	A [mm]	ØD [mm]	H [mm]	I [mm]	J [mm]	K [mm]	L1 [mm]	L2 [mm]
38	25	8.7	38	38.1	15	34	56	982
51	25	8.7	51	50.8	21	46	66	956
78	41	11.1	78	76.2	35	73	95	1213

# SFT MULTIFIX

## Assembly



## Designation & Ordering code

### RUBBER BUSH

Configuration example : **B** **51** **1820**

#### Series

**B** Rubber bush

#### Size

**38**

**51**

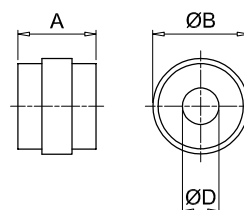
**78**

#### Pipe diameter

		38	51	78
<b>6</b>	Pipe Ø6 mm	•	•	
<b>8</b>	Pipe Ø8 mm	•	•	•
<b>10</b>	Pipe Ø10 mm - 1/8"	•	•	•
<b>1214</b>	Pipe Ø12 ÷ 14 mm - 1/4"	•	•	•
<b>1516</b>	Pipe Ø15 ÷ 16 mm - 3/8"	•	•	•
<b>1820</b>	Pipe Ø18 ÷ 20 mm - 1/2"	•	•	•
<b>22</b>	Pipe Ø22 mm - 5/8"		•	•
<b>25</b>	Pipe Ø25 mm - 3/4"		•	•
<b>28</b>	Pipe Ø28 mm		•	
<b>2830</b>	Pipe Ø28 ÷ 30 mm - 7/8"			•
<b>33</b>	Pipe Ø33 mm - 1"			•
<b>3538</b>	Pipe Ø35 ÷ 38 mm - 1 1/8"			•
<b>42</b>	Pipe Ø42 mm - 1 1/4"			•
<b>50</b>	Pipe Ø50 mm			•

**B**

## Dimensions



Size	A [mm]	ØB [mm]
<b>38</b>	31	25
<b>51</b>	31	38
<b>78</b>	45	59

Pipe	ØD [mm]	Ø nom. pipe [inch]
<b>6</b>	6	-
<b>8</b>	8	-
<b>10</b>	10	1/8"
<b>1214</b>	12÷14	1/4"
<b>1516</b>	15÷16	3/8"
<b>1820</b>	18÷20	1/2"
<b>22</b>	22	5/8"
<b>25</b>	25	3/4"
<b>28</b>	28	-
<b>2830</b>	28÷30	7/8"
<b>33</b>	33	1"
<b>3538</b>	35÷38	1 1/8"
<b>42</b>	42	1 1/4"
<b>50</b>	50	-



### HEXAGON CONNECTION NUT

Configuration example : **D** **51** **M**

#### Series

**D** Hexagon connection nut

#### Size

**38**

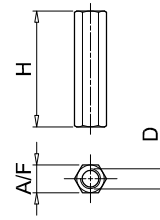
**51**

**78**

#### Screws

**M** Metric

**U** UNC



Size	Screws [mm]	D [mm]	H [mm]	A/F [mm]
<b>38</b>	M	M8	33	11
	U	5/16" UNC		
<b>51</b>	M	M8	46	11
	U	5/16" UNC		
<b>78</b>	M	M10	72	13
	U	3/8" UNC		

### STUD BOLT

Configuration example : **P** **3851** **M**

#### Series

**P** Stud bolt

#### Size

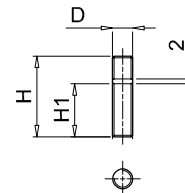
**3851**

**78**

#### Screws

**M** Metric

**U** UNC



Size	Screws [mm]	D [mm]	H [mm]	H1 [mm]
<b>38 - 51</b>	M	M8	32	21
	U	5/16" UNC		
<b>78</b>	M	M10	38	22
	U	3/8" UNC		

### HEXAGON HEAD SCREW

Configuration example : **V** **3851** **M**

#### Series

**V** Hexagon head screw

#### Size

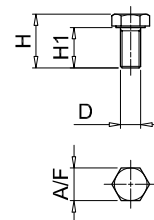
**3851**

**78**

#### Screws

**M** Metric

**U** UNC



Size	Screws [mm]	D [mm]	H [mm]	H1 [mm]	A/F [mm]
<b>38 - 51</b>	M	M8	21	16	13
	U	5/16" UNC			
<b>78</b>	M	M10	36	30	17
	U	3/8" UNC			

### WELDING FOOT

Configuration example : **W** **3851**

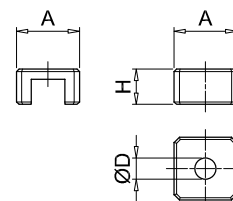
#### Series

**W** Welding foot

#### Size

**3851**

**78**



Size	H [mm]	ØD [mm]	H [mm]
<b>38 - 51</b>	25	8.5	14
<b>78</b>	32	11	16



# OB series

Cleaning covers



## Technical data

### Cleaning covers

The pressure die-cast aluminium alloy cleaning covers offer superior mechanical strength and are manufactured to DIN 24339 standard. They provide easy access to the inside of the oil tank for inspection and cleaning purposes, without necessarily having to dismantle the unit. On request and also for small quantities inspection doors can be supplied with:

- customer logo
- hole cut for visual level indicator
- hole cut for visual and electrical level indicator
- oil sample plug

#### Compatibility with fluids

- Mineral oils types HH-LL-HM-HR-HV-HC, to ISO 6743/4 standard
- Water based emulsions types HFAE-HFAS, to ISO 6743/4 standard
- Water glycol type HFC, to ISO 6743/4 standard: ask for anodized version

OB275 and OB400 cleaning covers are designed according to DIN 24339.

### Materials

- Cleaning covers: Pressure die-cast aluminium alloy / cast iron
- Seal: NBR 70 Shore A

Weight	with seal	without seal
OB275	2.06 kg	1.76 kg
OB350	2.10 kg	1.80 kg
OB356	2.10 kg	1.80 kg
OB400	3.20 kg	2.90 kg
OB475	3.70 kg	3.40 kg

### Operating temperature

From -30 °C to +80 °C



## Designation & Ordering code

OB

#### Size

OB275

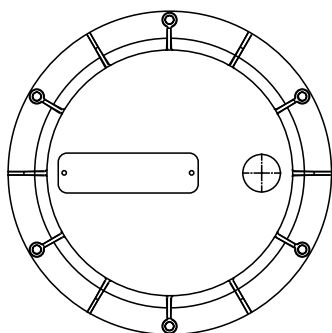
OB350

OB356

OB400

OB475

## Available customization

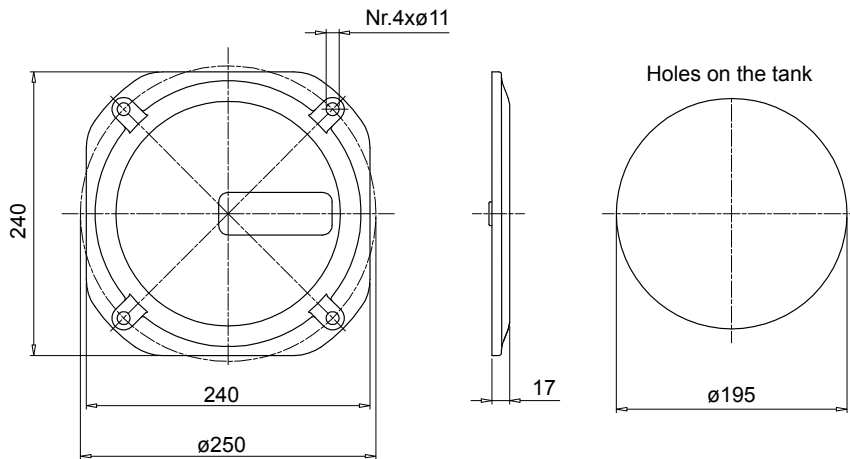


Nameplate with customer logo  
Ordering information: **OB475LOGOP05**

The nameplates applied to the new inspection door are identical to those applied to the old door. The difference with the new door is that nameplates are fixed with rivets.

For ordering information codes, minimum order quantities, fixing hole positions and other details not indicated in this publication, contact MP Filtri Technical and Sales Department.

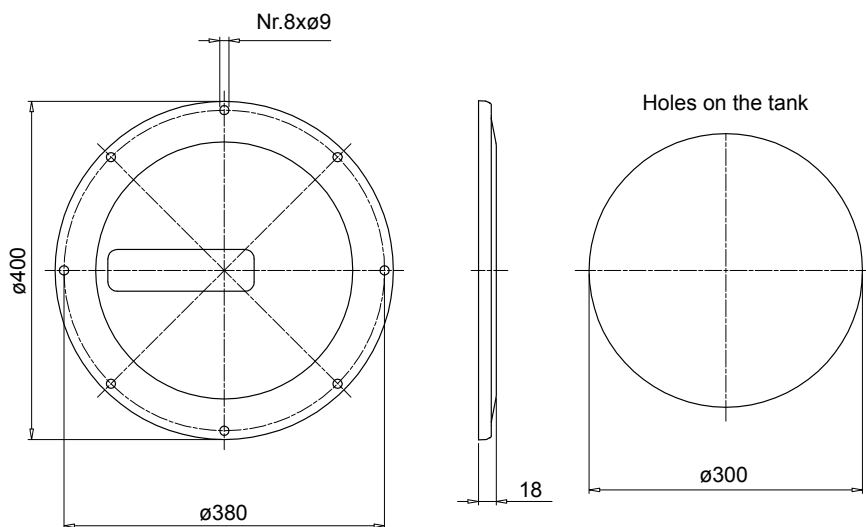
## OB275



Code	Description	Seal
<b>OB275P01GN</b>	Door with MP Logo	NBR
<b>OB275P02GN</b>	Blank cover	NBR
<b>OB275P01GV</b>	Door with MP Logo	FPM
<b>OB275P02GV</b>	Blank cover	FPM

Code	Description
<b>OB275P01</b>	Door with MP Logo
<b>OB275P02</b>	Blank cover
<b>GU0275NBR</b>	Seal
<b>GU0275VTN</b>	Seal

## OB400



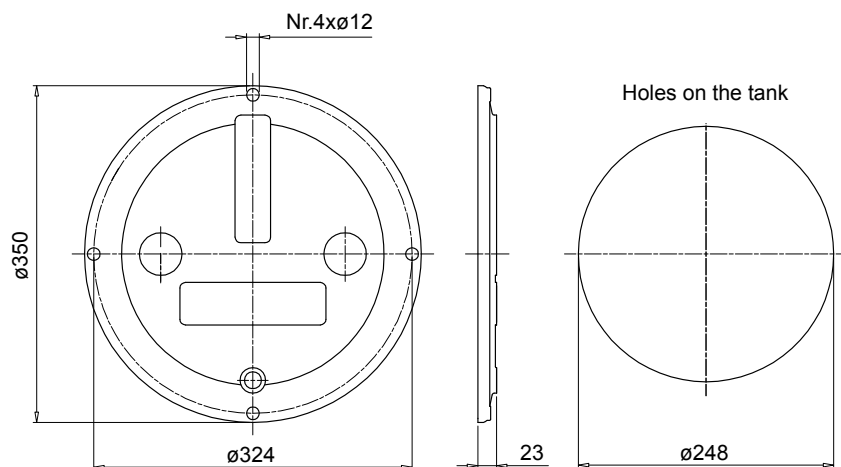
Code	Description	Seal
<b>OB400P01GN</b>	Door with MP Logo	NBR
<b>OB400P02GN</b>	Blank cover	NBR
<b>OB400P01GV</b>	Door with MP Logo	FPM
<b>OB400P02GV</b>	Blank cover	FPM

Code	Description
<b>OB400P01</b>	Door with MP Logo
<b>OB400P02</b>	Blank cover
<b>GU0400DINNBR</b>	Seal
<b>GU0400DINVTN</b>	Seal

# OB OB350 - OB356 - OB475

## Dimensions

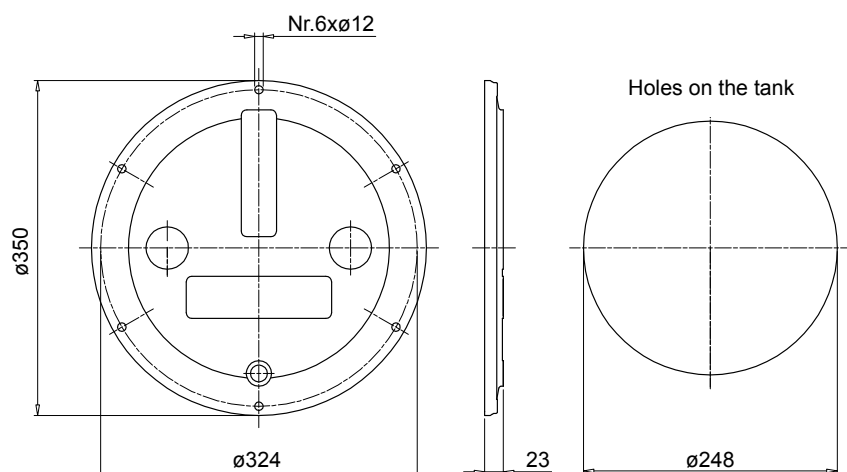
### OB350



Code	Description	Seal
<b>OB350P01GN</b>	Door with MP Logo	NBR
<b>OB350P02GN</b>	Blank cover	NBR
<b>OB350P01GV</b>	Door with MP Logo	FPM
<b>OB350P02GV</b>	Blank cover	FPM

Code	Description
<b>OB350DIN000</b>	Door
<b>GU0350DINNBR</b>	Seal
<b>GU0350DINVTN</b>	Seal

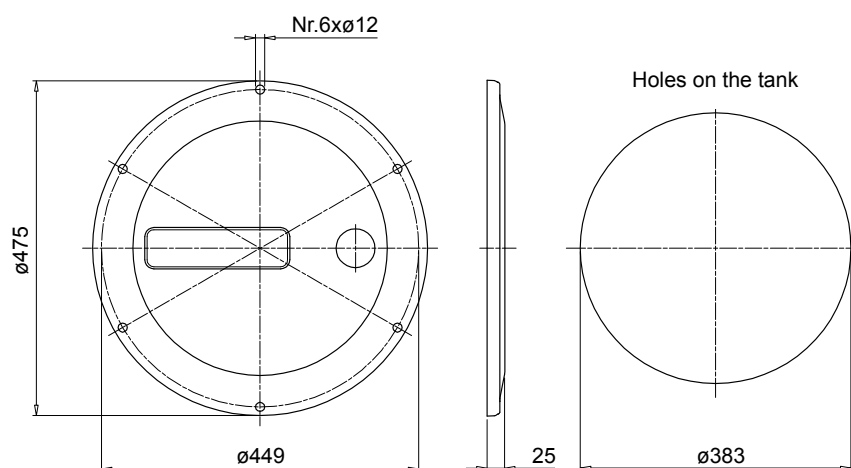
### OB356



Code	Description	Seal
<b>OB356P01GN</b>	Door with MP Logo	NBR
<b>OB356P02GN</b>	Blank cover	NBR
<b>OB356P01GV</b>	Door with MP Logo	FPM
<b>OB356P02GV</b>	Blank cover	FPM

Code	Description
<b>OB356DIN000</b>	Door
<b>GU0350DINNBR</b>	Seal
<b>GU0350DINVTN</b>	Seal

### OB475



Code	Description	Seal
<b>OB475P01GN</b>	Door with MP Logo	NBR
<b>OB475P02GN</b>	Blank cover	NBR
<b>OB475P01GV</b>	Door with MP Logo	FPM
<b>OB475P02GV</b>	Blank cover	FPM

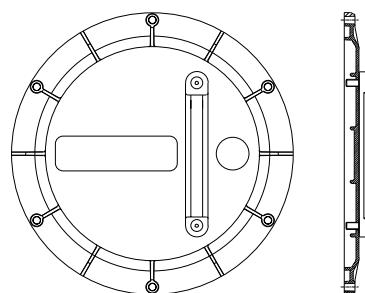
Code	Description
<b>OB475P01</b>	Door with MP Logo
<b>OB475P02</b>	Blank cover
<b>GU0475DINNBR</b>	Seal
<b>GU0475DINVTN</b>	Seal

## LVA

**LVA** visual level indicators (see page 96) can also be mounted on MP Filtri cleaning covers to improve the maintenance and the service level.

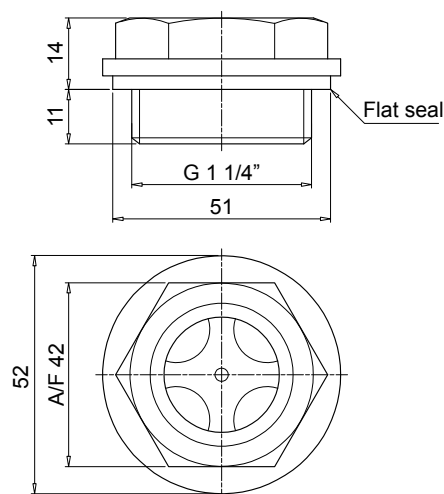
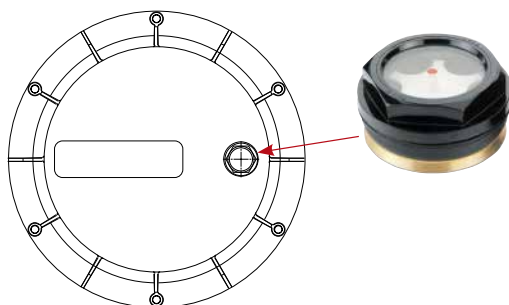
Indicator code	OB275**	OB350**	OB356**	OB400**	OB475**
<b>LVA 10**</b>	•	•	•	•	•
<b>LVA 20**</b>		•	•	•	•
<b>LVA 30**</b>				•	•

**Note:**  
Preparing for to fit  
the level on request



## LCPG42N...S

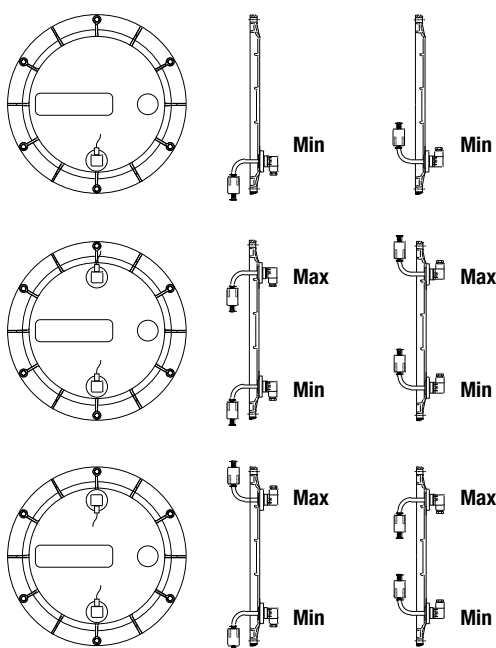
**LCP** spy eyes (see page 90) can also be mounted on MP Filtri cleaning covers to improve the maintenance and the service level.



## LEG

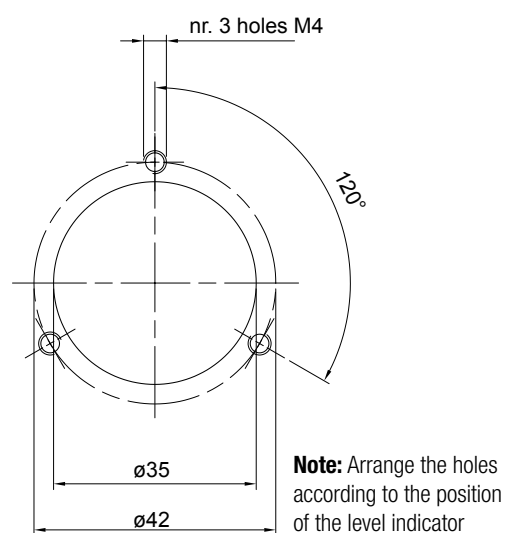
**LEG** series electrical level indicators (see page 106) are supplied with a 3-hole fixing flange and a reed switch having NC-NO contacts. Designed typically for installation on the vertical walls of oil tanks, these devices can also be mounted onto OB475 inspection door to indicate the minimum and maximum oil levels in the tank.

To operate correctly, the float must be positioned vertically and at a minimum distance of 35 mm from walls made of ferrous metal.



**Note:** Prepared  
for visual indicator  
on request

Layout of fixing holes for LEG level indicator



**Note:** Arrange the holes  
according to the position  
of the level indicator





# SE10LT series

Aluminium tanks



# SE10LT GENERAL INFORMATION

## Technical data

### Aluminium tanks

With 10 litres capacity, MP Filtri aluminium tank SE10LT allows the assembly of a compact hydraulic power unit.

Made of pressure die-cast aluminium alloy, these tanks feature superior strength and optimum design and are ideal for compact hydraulic power units.

Generously proportioned fins ensure efficient cooling.

The tank is supplied with:

- M6 threaded fixing holes for lid
- feet with M8 threaded fixing holes
- G 3/8" threaded drain hole

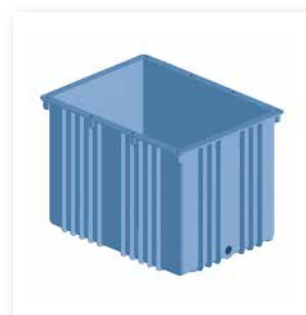
The lid is sealed by a gasket made of special paper, which must be ordered separately indicating code "GUS 10.0".

### Material

Pressure die-cast aluminium alloy

### Weight

SE10LT 4 kg



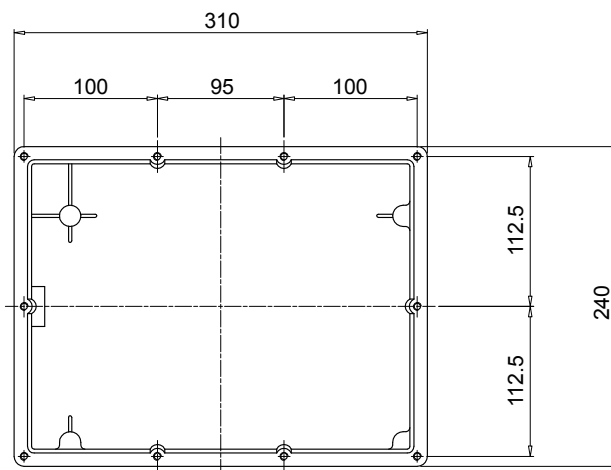
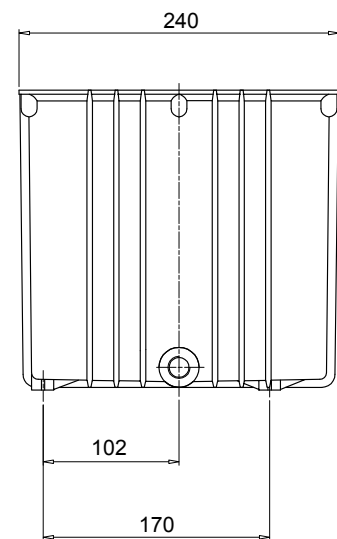
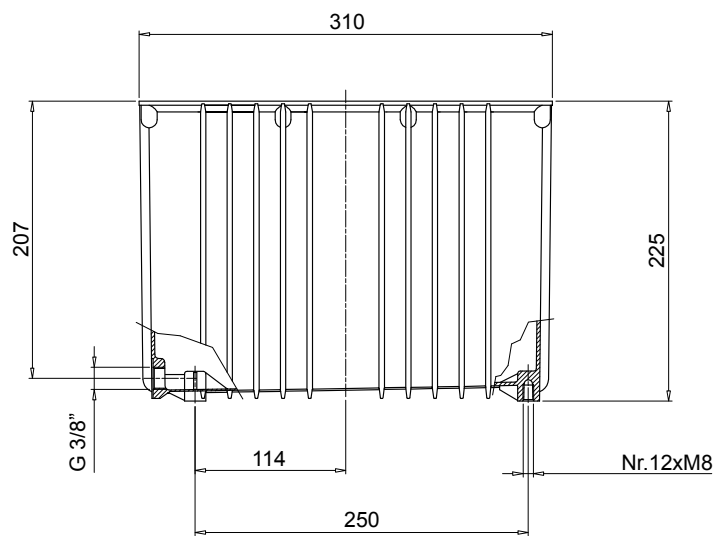
## Designation & Ordering code

SE10LT

Size

SE10LT

SE10LT



All data, details and words contained in this publication are provided for information purposes only.  
MP Filtri reserves the right to make modifications to the models and versions of the described products at any time  
for both technical and / or commercial reasons.  
The colors and the pictures of the products are purely indicative.  
Any reproduction, partial or total, of this document is strictly forbidden.  
All rights are strictly reserved.





## WORLDWIDE NETWORK

### HEADQUARTERS

**MP Filtri S.p.A.**  
Pessano con Bornago  
Milano - Italy  
+39 02 957031  
[sales@mpfiltri.it](mailto:sales@mpfiltri.it)

### BRANCH OFFICES

**ITALFILTRI LLC**  
Moscow - Russia  
+7 (495) 220 94 60  
[mpfiltrirussia@yahoo.com](mailto:mpfiltrirussia@yahoo.com)

**MP Filtri Canada Inc.**  
Concord, Ontario - Canada  
+1 905 303 1369  
[sales@mpfiltricanada.com](mailto:sales@mpfiltricanada.com)

**MP Filtri France SAS**  
Villeneuve la Garenne  
France  
+33 (0)1 40 86 47 00  
[sales@mpfiltrifrance.com](mailto:sales@mpfiltrifrance.com)

**MP Filtri Germany GmbH**  
St. Ingbert - Germany  
+49 (0) 6894 95652-0  
[sales@mpfiltri.de](mailto:sales@mpfiltri.de)

**MP Filtri India Pvt. Ltd.**  
Bangalore - India  
+91 80 4147 7444 / +91 80 4146 1444  
[sales@mpfiltri.co.in](mailto:sales@mpfiltri.co.in)

**MP Filtri (Shanghai) Co., Ltd.**  
Shanghai - Minhang District - China  
+86 21 58919916 116  
[sales@mpfiltrishanghai.com](mailto:sales@mpfiltrishanghai.com)

**MP Filtri U.K. Ltd.**  
Bourton on the Water  
Gloucestershire - United Kingdom  
+44 (0) 1451 822 522  
[sales@mpfiltri.co.uk](mailto:sales@mpfiltri.co.uk)

**MP Filtri U.S.A. Inc.**  
Quakertown, PA - U.S.A.  
+1 215 529 1300  
[sales@mpfiltriusa.com](mailto:sales@mpfiltriusa.com)

## PASSION TO PERFORM



[mpfiltri.com](http://mpfiltri.com)